

TECHNISCHE DATEN





ESTRAD SAFETY R11/45+

PRODUKT






| | |
|-----------------------|--------------------|
| Estrad Safety R11/45+ | Sicherheitsboden |
| Klassifizierung | EN 685 / ISO 10874 |
| | 23/34/43 |



SPEZIFIKATIONEN

| | | | |
|-------------|---|-----------------------|-----------------------|
| Dicke |  | EN 428 / EN ISO 24346 | 2,0 mm |
| Gewicht |  | EN 430 / EN ISO 23997 | 2600 g/m ² |
| Rollenlänge |  | EN 426 / EN ISO 24341 | 20 m |
| Breite |  | EN 426 / EN ISO 24341 | 2 m |

PRODUKTEIGENSCHAFTEN

| EIGENSCHAFTEN | TESTMETHODE | ERGEBNIS |
|---|--|--|
| Raumluftzertifizierungen | | M1, FloorScore |
| Allgemeine Leistung | EN 13845 ASTM F1303 | Entspricht Entspricht |
| Brandklasse |  EN 13501-1 ASTM E648 Aus NCC Spec C1.10-3 | B _{fl} -s1 Klasse 1 Complies |
| Gleitreibungswiderstand Rutschsicherheit / -hemmung |  EN 13845 AS 4586 Appendix A AS 4586 Appendix D DIN 51130 RRL Pendulum Test Oberflächenrauheit | ESf P4 R11 R11 ≥ 45 (wet test - 4S Rubber/Slider 96) Rz ≥ 20 µm |
| Elektrostatisches Verhalten |  EN 1815 | ≤ 2 kV (antistatisch) |
| Abrieb und Kratzbeständigkeit |  EN 13845 EN 649 | 50,000 Umdrehungen Group T |
| Chemikalienbeständigkeit |  EN 423 | Bestanden, mit gutem Ergebnis |



KOLLEKTIONSFARBEN
ESTRAD SAFETY R11/45+



7754



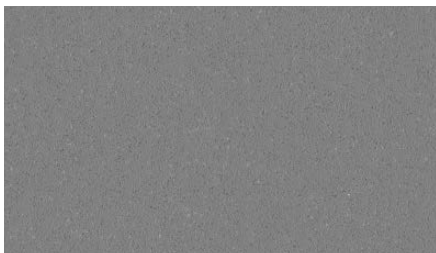
7755



7766



7756



7757



7758



7759



7760



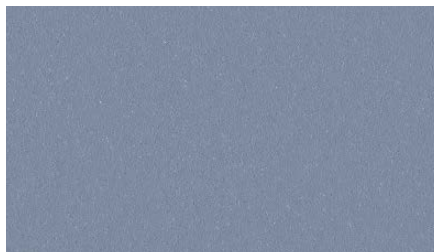
7761



7762



7763



7764



7765