

SCHWARZHORN CLS 300-5

PRODUCT DETAILS

Construction	Click 5 mm
Article Number / EAN Code	LTCLS3008-300-5 / 7393969113021
Design	Stone design
Width x Length x Thickness	11 3/4 x 23 5/8 x 1/4"
Weight per package / per m2	37 lbs / 16.8 lbs
Area per package / per pallet	23.7 sqft / 1115.1 sqft
Joint	Click5G
Installation method	Floating
Floor heating	Yes
Wear leayer thickness	0"

TECHNICAL PROPERTIES

Reaction To Fire	EN13501-1	Bfl-s1
Thermal Resistance R-Value		0.032 (m2K/W)
Residual indentation	EN ISO 24343-1	< 0.2 mm (*with underlayment)
Dimensional stability	EN ISO 23999	< 0.1 %
Colour fastness	EN ISO 105-B02	≥ 6

TECHNICAL PROPERTIES

Slip resistance	EN 13893	DS (>0.3)
Slip resistance	DIN 51130	R10
Statical electrical propensity	EN 1815	< 2 kV (antistatic)
Scratch resistance	EN16094	Pass with good results
Chemical resistance	EN ISO 26987	Pass with good results
Effect of castor chair	EN 425	Suitable
Resistance to bacteria and fungi		Good
Impact sound reduction	EN ISO 10140	20 ΔLw dB (IXPE underlayment)

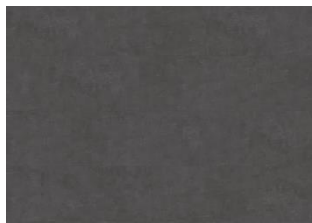


Descriptions & Imagery

All samples, images and product description, plus photo and brochure specifications are there for the sole purpose of giving an approximate idea of the items described in them. They shall not form part of the contract or have any contractual force and should be viewed for illustrative purposes only. We cannot guarantee that your computer's display or the quality of the print will accurately reflect the colour of the products. Your product may vary slightly from the images within this literature.

Kährs International |
www.kährs.com | ©Kährs,
USA & Canada 2024-07-27

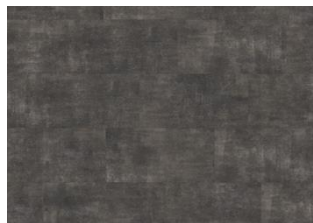
Other products in this collection



Schwarzhorn - Click 5 mm



Makalu - Click 5 mm



Steele - Click 5 mm



Matterhorn - Click 5 mm