

## MATTERHORN CLS 300

The Kährs Luxury Tiles Click floors has been designed for home and public environments that require floors with adhesive-free installation that are both beautiful and tough. They come in a variety of wood and stone designs. Maximum durability and stability is achieved through the rigid core and the unique 5G locking technology, enabling easy installation by clicking the tiles together. The Click floors are made from virgin vinyl with a rigid core. All floors in the collection have IXPE sound reducing backing, effectively controlling noise. The surface is treated with a strong ceramic coating resistant to wear and tear, scratching and water. They can be installed on an existing floor, making the Click floors ideal to use in renovation projects or when you want to retain the existing floor. Just like all our other Luxury Tiles floors, they are phthalate-free.

### PRODUCT DETAILS

Product type / Construction	Luxury Vinyl Tiles / Click 6 mm
Article Number / EAN Code	LTCLS3004-300 / 7393969110259
Design	Stone design
Width x Length x Thickness	300 x 600 x 6 mm
Weight per package / per m2	17.6 kg / 9.78 kg
Area per package / per pallet	1.8 m <sup>2</sup> / 86.4 m <sup>2</sup>
Joint	Click5G
Installation method	Floating
Floor heating	Yes
Wear leayer thickness	0.55 mm

### TECHNICAL PROPERTIES

Application	EN ISO 10874	23/33/42
Effect of furniture leg	EN ISO 16581	No visible damage/Change
Emission of formaldehyde		E1
Reaction To Fire	EN13501-1	Bfl-s1
Formaldehyde Emission	EN717-1	E1

### TECHNICAL PROPERTIES

Thermal Resistance R-Value		0.035 (m2K/W)
Residual indentation EN ISO 24343-1		< 0.2 mm (*with underlayment)
Dimensional stability	EN ISO 23999	< 0.1 %
Colour fastness	EN ISO 105-B02	≥ 6
Slip resistance	EN 13893	DS (>0.3)
Slip resistance	DIN 51130	R10
Statical electrical propensity	EN 1815	< 2 kV (antistatic)
Scratch resistance	EN16094	Pass with good results
Chemical resistance	EN ISO 26987	Pass with good results
Effect of castor chair	EN 425	Suitable
Resistance to bacteria and fungi		Good
Impact sound reduction	EN ISO 10140	20 ΔLw dB (IXPE underlayment)
Commercial usage classification	EN 14354:2017	Class 33



### Descriptions & Imagery

All samples, images and product description, plus photo and brochure specifications are there for the sole purpose of giving an approximate idea of the items described in them. They shall not form part of the contract or have any contractual force and should be viewed for illustrative purposes only. We cannot guarantee that your computer's display or the quality of the print will accurately reflect the colour of the products. Your product may vary slightly from the images within this literature.

www.kahrs.com | ©Kährs

2024-07-27

## Other products in this collection



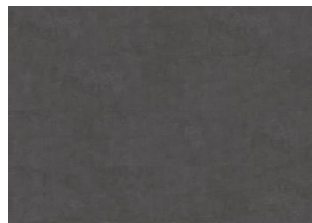
Kilimanjaro - Click 6 mm



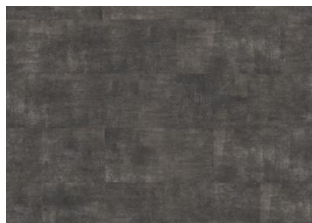
Makalu - Click 6 mm



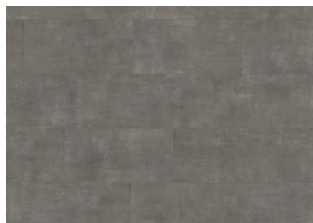
Matterhorn - Click 6 mm



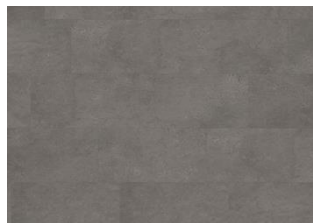
Schwarzhorn - Click 6 mm



Steele - Click 6 mm



Kebnekaise - Click 6 mm



Grossglockner - Click 6 mm



Lucania - Click 6 mm