

KEBNEKAISE CLICK 6 MM

The Kährs Luxury Tiles Click floors has been designed for home and public environments that require floors with adhesive-free installation that are both beautiful and tough. They come in a variety of wood and stone designs. Maximum durability and stability is achieved through the rigid core and the unique 5G locking technology, enabling easy installation by clicking the tiles together. The Click floors are made from virgin vinyl with a rigid core. All floors in the collection have IXPE sound reducing backing, effectively controlling noise. The surface is treated with a strong ceramic coating resistant to wear and tear, scratching and water. They can be installed on an existing floor, making the Click floors ideal to use in renovation projects or when you want to retain the existing floor. Just like all our other Luxury Tiles floors, they are phthalate-free.

PRODUCT DETAILS

| | |
|-------------------------------|---|
| Product type / Construction | Luxury Vinyl Tiles and Planks / Click SPC LVT |
| Article Number / EAN Code | LTCLS3005-300 / 7393969110266 |
| Design | Tile Design |
| Width x Length x Thickness | 300 x 600 x 6 mm |
| Weight per package / per m2 | 17.6 kg / 9.78 kg |
| Area per package / per pallet | 1.8 m ² / 86.4 m ² |
| Joint | Click5G |
| Installation method | Floating |
| Floor heating | Yes |
| Wear leayer thickness | 0.55 mm |
| Warranty | 30 years |

TECHNICAL PROPERTIES

| | | |
|--------------------------|--------------|--------------------------|
| Application | EN ISO 10874 | 23/33/42 |
| Effect of furniture leg | EN ISO 16581 | No visible damage/Change |
| Impact resistance | | >1800 mm |
| Emission of formaldehyde | E1 | |

TECHNICAL PROPERTIES

| | | |
|-------------------------------------|----------------|-------------------------------|
| Reaction To Fire | EN13501-1 | Bfl-s1 |
| Formaldehyde Emission | EN717-1 | E1 |
| Thermal Resistance R-Value | | 0.035 (m2K/W) |
| Residual indentation EN ISO 24343-1 | | < 0.2 mm (*with underlayment) |
| Dimensional stability | EN ISO 23999 | < 0.1 % |
| Colour fastness | EN ISO 105-B02 | ≥ 6 |
| Slip resistance | EN 13893 | DS (>0.3) |
| Slip resistance | DIN 51130 | R10 |
| Statical electrical propensity | EN 1815 | < 2 kV (antistatic) |
| Scratch resistance | EN16094 | Pass with good results |
| Chemical resistance | EN ISO 26987 | Pass with good results |
| Effect of castor chair | EN 425 | Suitable (25.000 cycles) |
| Resistance to bacteria and fungi | | Good |
| Impact sound reduction | EN ISO 10140 | 20 ΔLw dB (IXPE underlayment) |
| Commercial usage classification | EN 14354:2017 | Class 33 |



Descriptions & Imagery

All samples, images and product description, plus photo and brochure specifications are there for the sole purpose of giving an approximate idea of the items described in them. They shall not form part of the contract or have any contractual force and should be viewed for illustrative purposes only. We cannot guarantee that your computer's display or the quality of the print will accurately reflect the colour of the products. Your product may vary slightly from the images within this literature.

www.kahrs.com | ©Kährs

2026-06-11

Other products in this collection



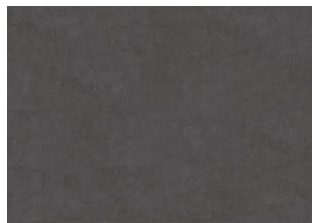
KILIMANJARO CLICK



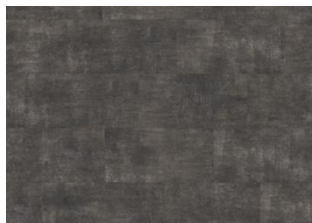
MAKALU CLICK



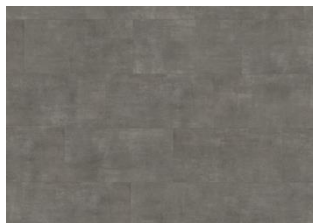
MATTERHORN CLICK



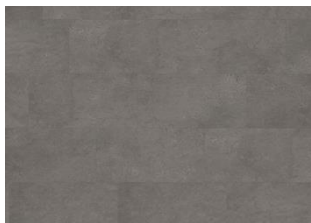
SCHWARZHORN CLICK 6 MM



STEELE CLICK 6 MM



KEBNEKAISE CLICK



GROSSGLOCKNER CLICK



LUCANIA CLICK